

GROUPE  
RAGNI

# INSPIRATION



# SUMMARY

## 02. GROUPE RAGNI

History

Mission statement

An international presence

GROUPE RAGNI's brands

## 06. Lighting applications

08/ Buildings

22/ Building surroundings

42/ Parks, gardens & squares

56/ Soft paths

72/ Bus stops

80/ Urban & residential

112/ Pedestrian crossings

118/ Roads & highways

132/ Parkings

140/ Sports facilities

146/ Road structures

## 162. GROUPE RAGNI DNA

162/ Tailor-made

166/ Technical studies

168/ Upgradeable and connected

169/ Contact us

## 170. Index



## GROUPE RAGNI

An enriched path since our creation



// We facilitate access to well-being and security of public spaces for people whilst respecting nature and reducing the costs for communities. //



## French designer and manufacturer of public lighting

*Custom lights, reflecting French expertise, created to suit the communities*

- **In-depth expertise** in the creation of innovative, well thought-out public lighting solutions for urban applications, roads, parks & gardens, squares, and residential use
- **Tailor-made lighting solutions** reflecting each community's unique DNA

## The German benchmark for architects and lighting designers

*High-end lights for a touch of sophistication and design in urban spaces*

- **Working on the light**, multiple features, and the design
- **Creating holistic approaches** to urban planning and open spaces
- **Designing the public space** in harmony with people, the landscape, and the architecture

## The reliability of one of the oldest public lighting brands

*A functional range of lights with an understated design and proven efficiency*

- **Quality** solutions that are **robust** and **reliable**
- Lights dedicated to **roads, intersections, parking areas, pedestrian areas, and public installations**

## A company with a social purpose offering responsive, adaptable, connected solutions for sustainable regions

*A connected solution to support the ecological transition of regions*

- Next-generation **remote management system**
- **Open, interoperable platform** to optimise energy use
- **Scalable offering** that is enriched by our customers' projects
- Support offering to make the most of the data collected and **improve services to citizens**

## Pioneering LED solutions in light marking and enhancement for innovative, sustainable lighting solutions

*Demanding expertise for quality, responsiveness and innovation*

- **A wide range of applications**: urban enhancement, signage, tunnels, pathways, etc.
- **A customized offer** for unique projects
- **Complete control of the production chain**, from design to manufacture

## Mindful and innovative safety lighting signs: solar, very low voltage, reflective and remote-controlled

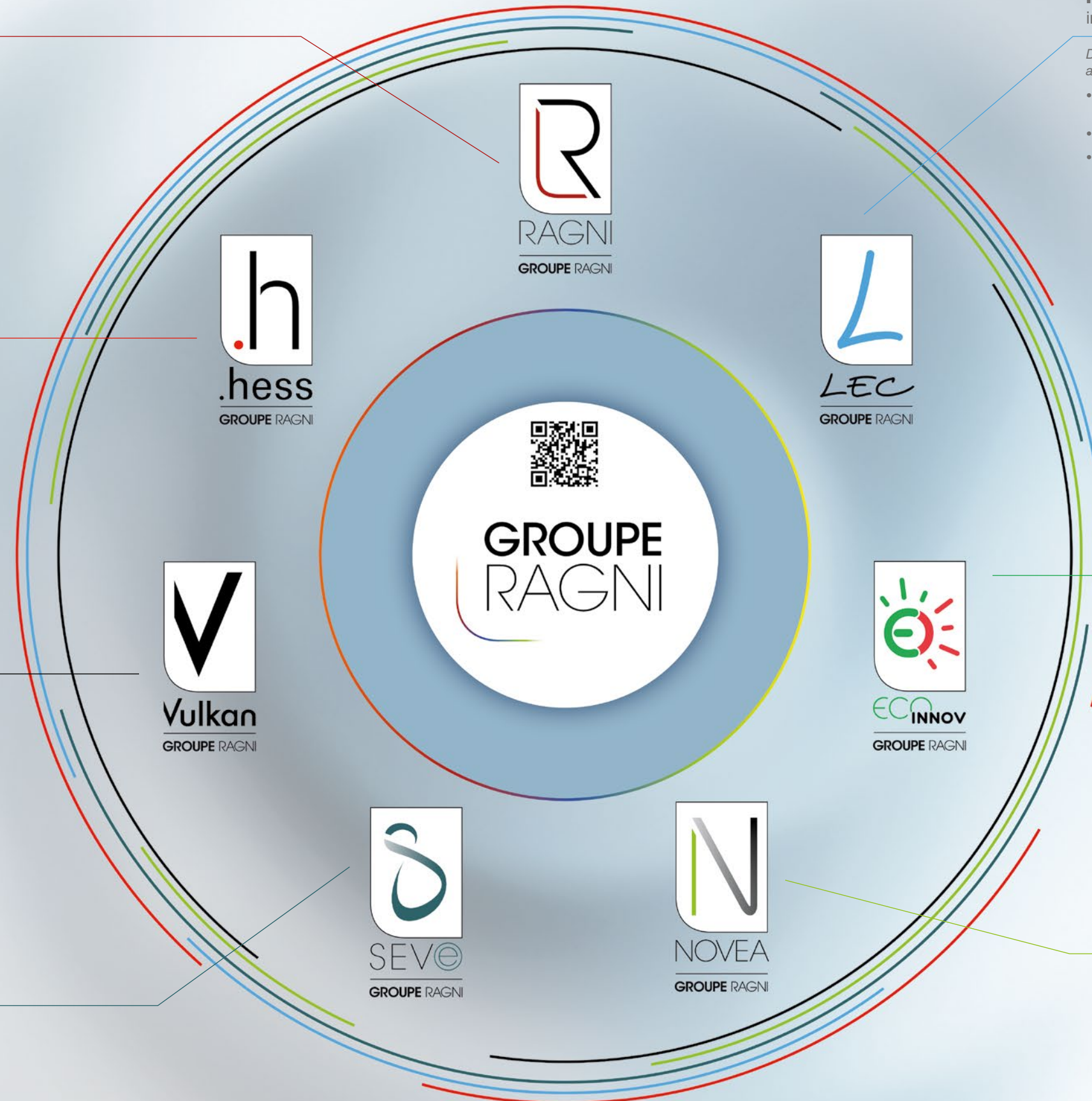
*Technology at the service of user safety and the environment*

- **A wide range of applications**: paths, chicanes, roundabouts, parks, parking lots, cycle paths, footbridges, roads, etc.
- **Tailor-made solutions** for your projects
- **High luminous performance and autonomy**

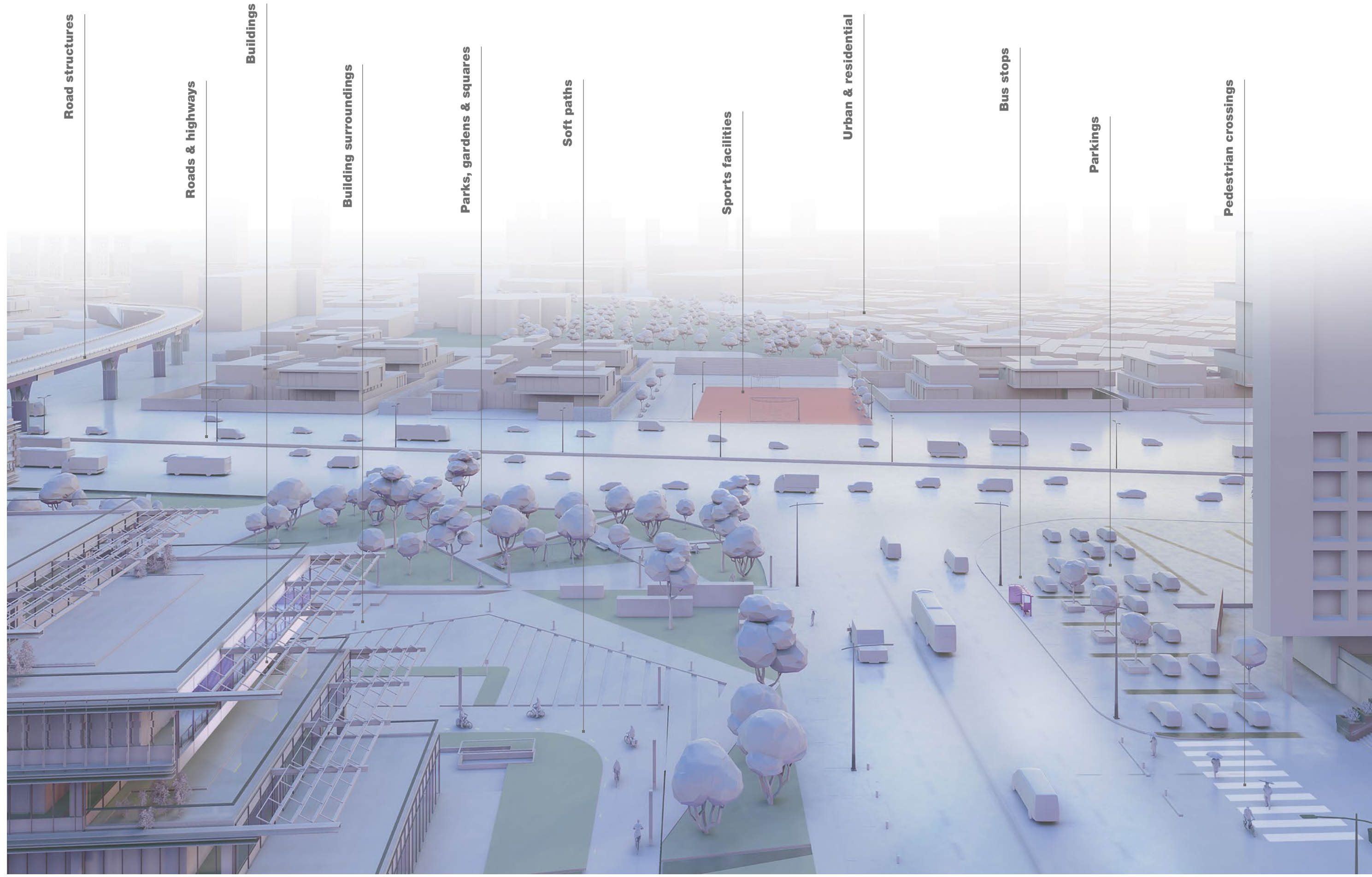
## French and European pioneer in the design and manufacture of autonomous solar public lighting systems

*An efficient, self-powered, and sustainable solution*

- Efficient lighting and high autonomy
- Total independence from the electrical network, savings guaranteed
- Long component life, no energy costs, reduced maintenance
- No CO2 emissions during use, protecting the environment and reducing light pollution











# BUILDINGS



Lighting becomes a signature element, a language that interacts with materials and reveals every detail—sculpted facades, majestic arches, and subtle textures. With connected luminaires, the atmosphere changes according to the seasons, events, and urban rhythms. Light and shadow intertwine to enhance spaces, transforming everyday life into a living canvas.

LED technology, combined with intelligent dimming and dedicated optics, shapes energy-efficient lighting that respects biodiversity. Perfect synchronization, precise control: every nuance of light becomes a refined gesture, serving both elegance and sustainability.

Credits from left to right:  
 1 - © Xavier Chabert, Product: LEC - Luminy 4  
 2 - Client: Österreichische Bundesforste AG - Lighting designer: Gunther Ferencsin - Installer: Elektrotechnik Unger  
 Mannsdorf - © Karin Ahamer Photography, Product: LEC - Luminy 2  
 3 - © MFROMER, Product: LEC - Allevard







Credits from left to right:  
 1/2 - Project owner:  
 Assemblée nationale -  
 Lighting designer:  
 NoctaBene -  
 Christophe Canadell  
 & Camila Le Bertre -  
 Installation: Eiffage  
 Énergie Systèmes -  
 Programmation:  
 SOLILED - © Assemblée  
 nationale 2023. Products:  
 LEC - Luminy 2, Luminy 4,  
 Alicante, Passy.  
 3 - Products: HESS -  
 Accadia L, Shadow  
 Lights.







Credits from left to right:  
 1 - © Jean-Philippe Humbert. Specifier: Daniel Buren. Product: LEC  
 2 - © HESS. Lighting design: Vogt und Partner, Winterthur (CH). Architect: Planning Office of the City of Singen, Mrs Gräble-Menrad and Mr Rosol. Product: HESS - City Elements 230.  
 3 - © Camille Lafon - [www.studio-camille.fr](http://www.studio-camille.fr). Products: LEC - Luminy 6, Corsica.





Credits from left to right:  
 1 - © Julien Thomazo -  
 Photography. Product:  
 LEC - Brunei  
 2 - © MFROMER. Product:  
 LEC - Allevard, Luminy 4 .  
 3 - © Anthony Brzeski.  
 Product: LEC - Special







Credits from left to right:

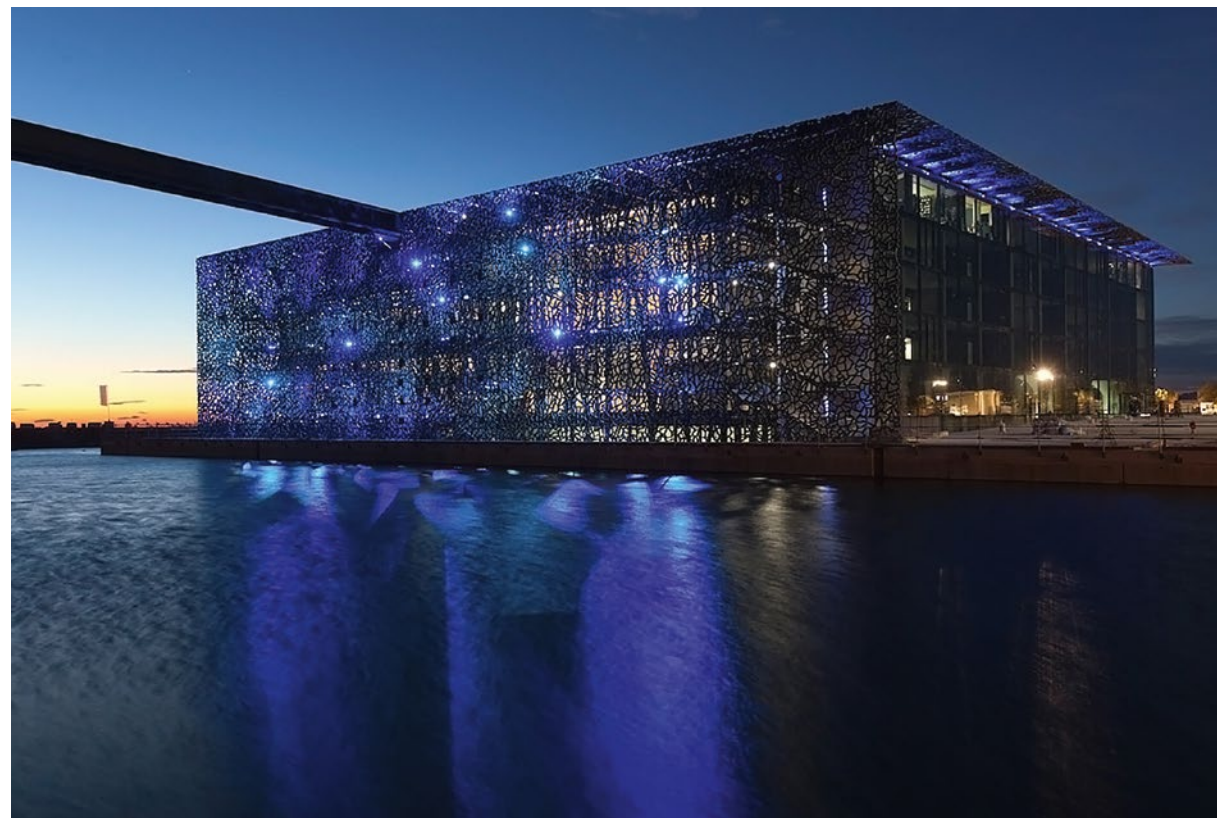
1 - © Michel Djaoui/  
Noël Bouchut. Lighting  
designer: Atelier Roland  
JEOL. Installation:  
EIFFAGE Energie  
Systèmes. Products:  
LEC - Lignon, Corsica,  
Arches, Passy.

2 - © Xavier Chabert /  
Guillaume Jéol. Project  
owner: City of Lyon.  
Product: LEC - Corsica.

3 - © LEC. Project owner:  
GEIE Tunnel du Mont  
Blanc. Lighting designer:  
L'Agence lumière.  
Products: LEC - Luminy  
2 & 4











Credits from left to right:  
 1 - © LEC. Products:  
 LEC - Allevard, Arches,  
 Luminy.  
 2 - © LEC. Project  
 owner: Chai Les Davids.  
 Products: LEC - Luminy 2  
 & 4, Lignon.  
 3 - © LEC. Specifier:  
 Thierry Guillhot. Products:  
 LEC - Brunei, Arches.







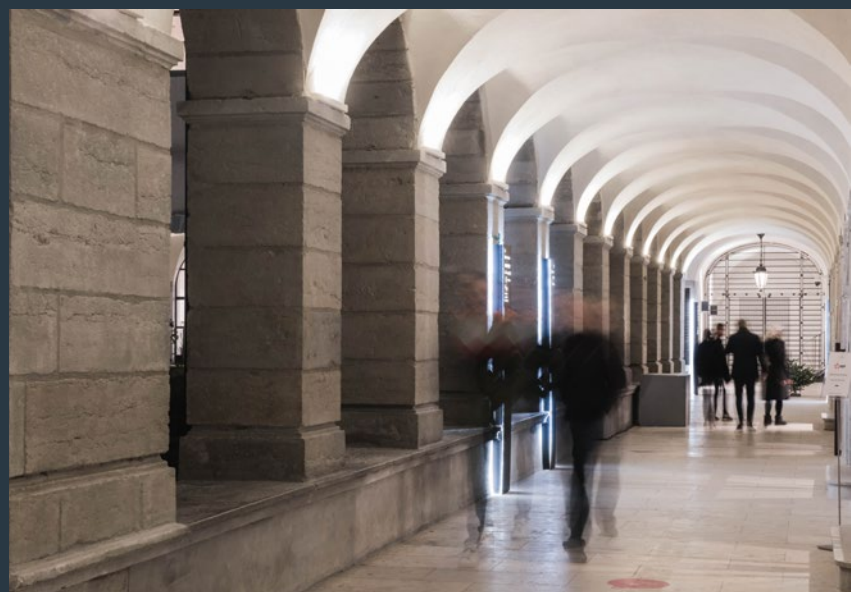
# BUILDING SURROUNDINGS



The surroundings of a building are reinvented under a subtle glow, playing with shadow and light to guide and enchant. Discreet luminaires blend into pathways and gardens, while advanced features such as motion detection preserve the delicate balance of the night.

Water, sculptures, and reliefs come to life through sophisticated lighting variations, with RGBW options shaping the atmosphere. Warm and soft hues, programmable lighting scenes... each space adapts, offering a harmony of functionality and nocturnal poetry.

Credits from left to right:  
1 - © A.J. Fanthome, Architect and Lighting designer: Archohm. Product: LEC - Chateaufort.  
2 - © Frédéric Le Quére. Product: RAGNI: Korner  
3 - © LEC. Product: LEC - Arches.











Credits from left to right:  
 1 - © NOVÉA ÉNERGIES. Product: NOVÉA ÉNERGIES - Enoa.  
 2 - © Spanto. Products: RAGNI - Caléti.  
 3 - © Robert Walsh 2017. Product: HESS - City Elements 230.  
 4 - © RAGNI. Product: RAGNI - Griff S.  
 5 - © A.J. Fanthome. Architect and Lighting designer: Archohm. Product: LEC - Chateaufneuf.





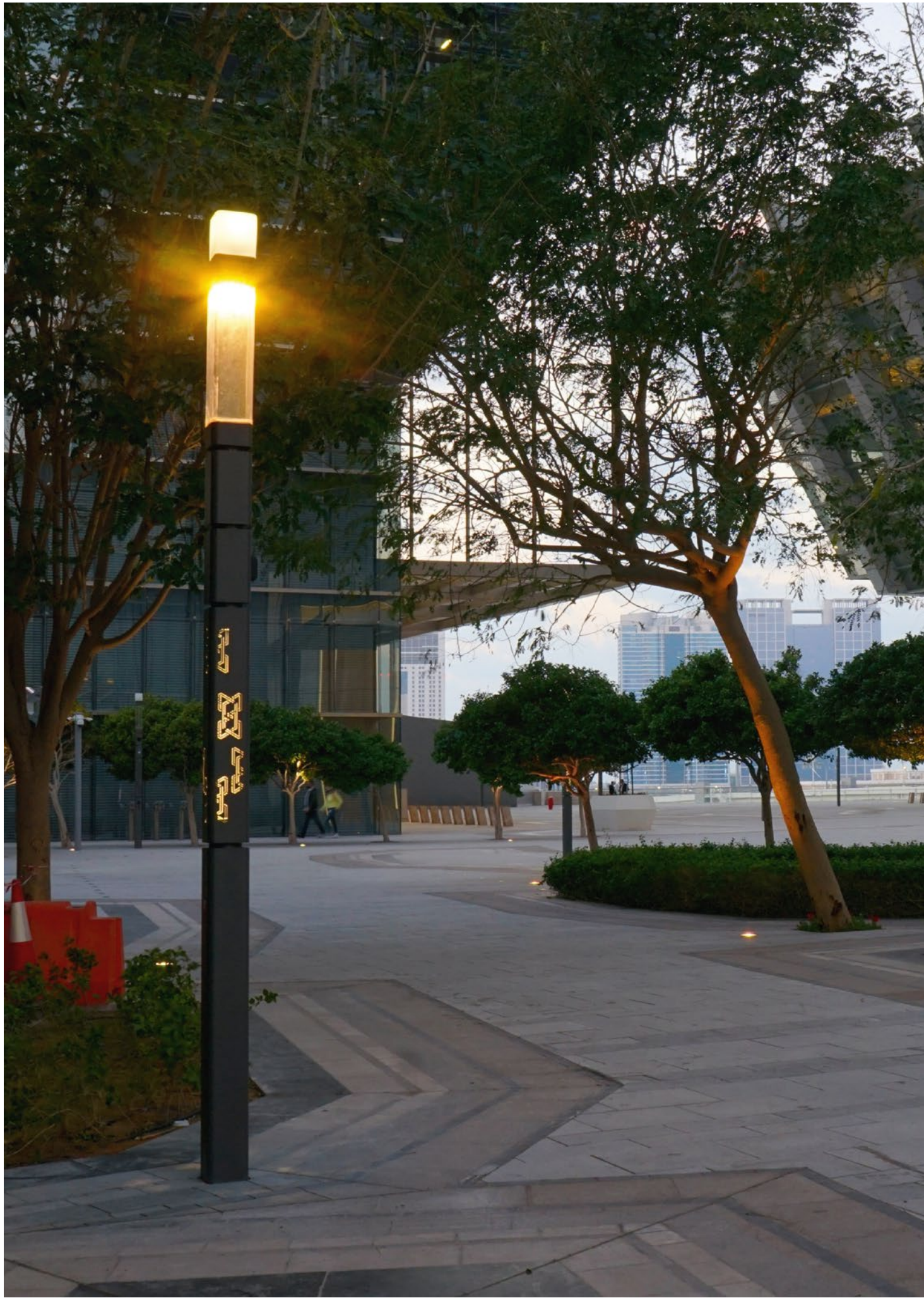


Credits from left to right:  
 1 - © Spanto. Product: RAGNI - Kassio.  
 2 - © Nathan Häusermann. Product: RAGNI - Irys Mini.  
 3 - © Leigh Simpson. Product: LEC - Lucerne.  
 4 - © Alain Issock. Product: RAGNI - Monaco.  
 5 - © Claire Bailey. Product: RAGNI - Lampion Glow special.









Credits from left to right:  
 1 - © RAGNI. Product: RAGNI - Korner.  
 2 - © AJJN Photography. Product: RAGNI - Domitienne Flex.  
 3 - © J. Lichtl. Product: HESS - City Elements, Vigo.



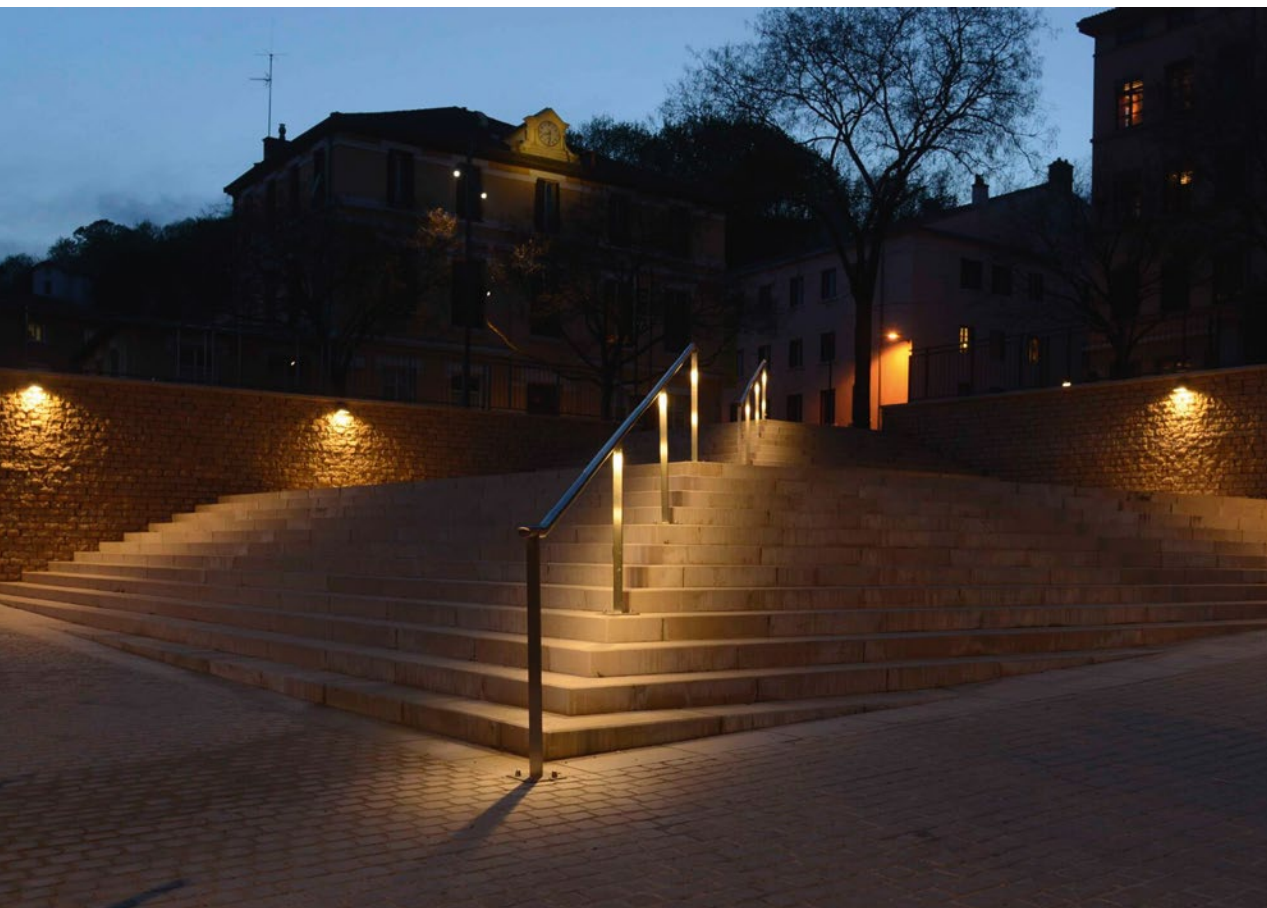




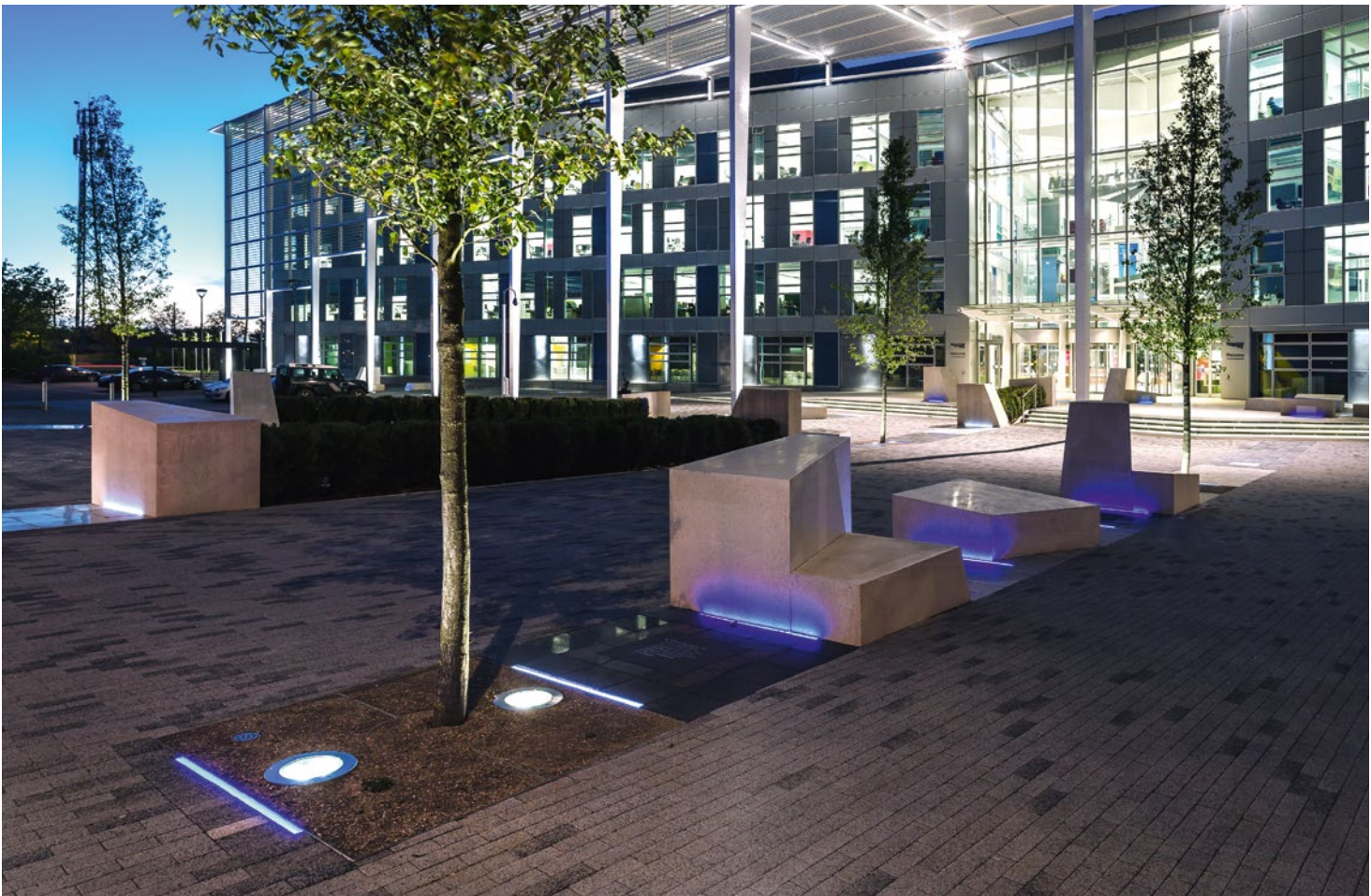
REGIONAL TRANSPORTATION INTERMODAL CENTER

Taxis Only  
Lot A  
Drop-off

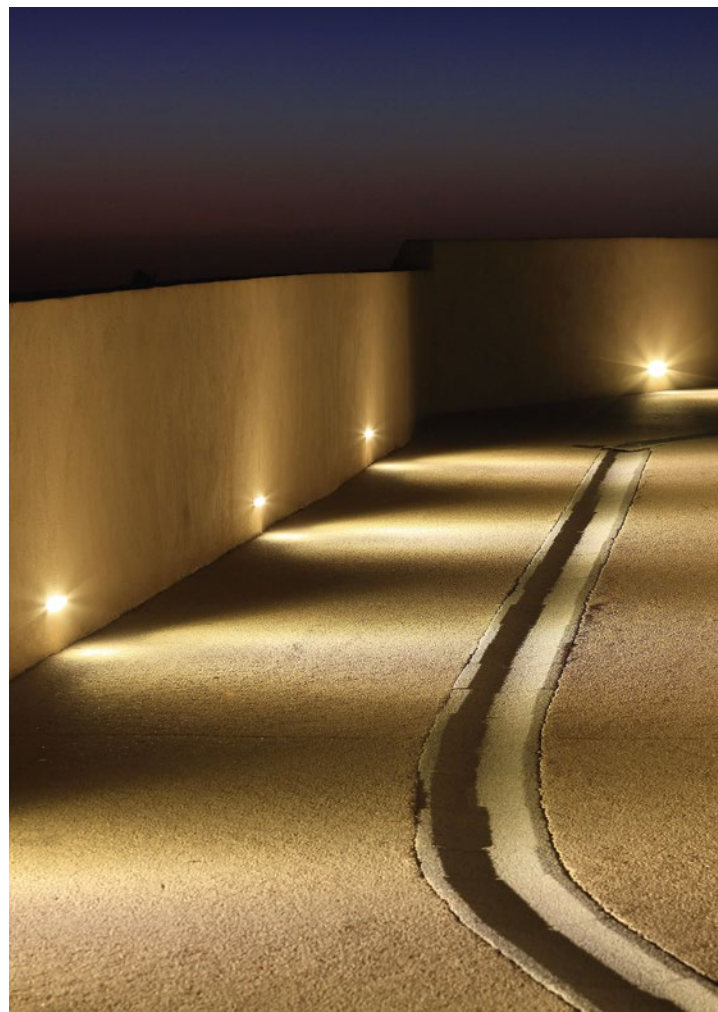
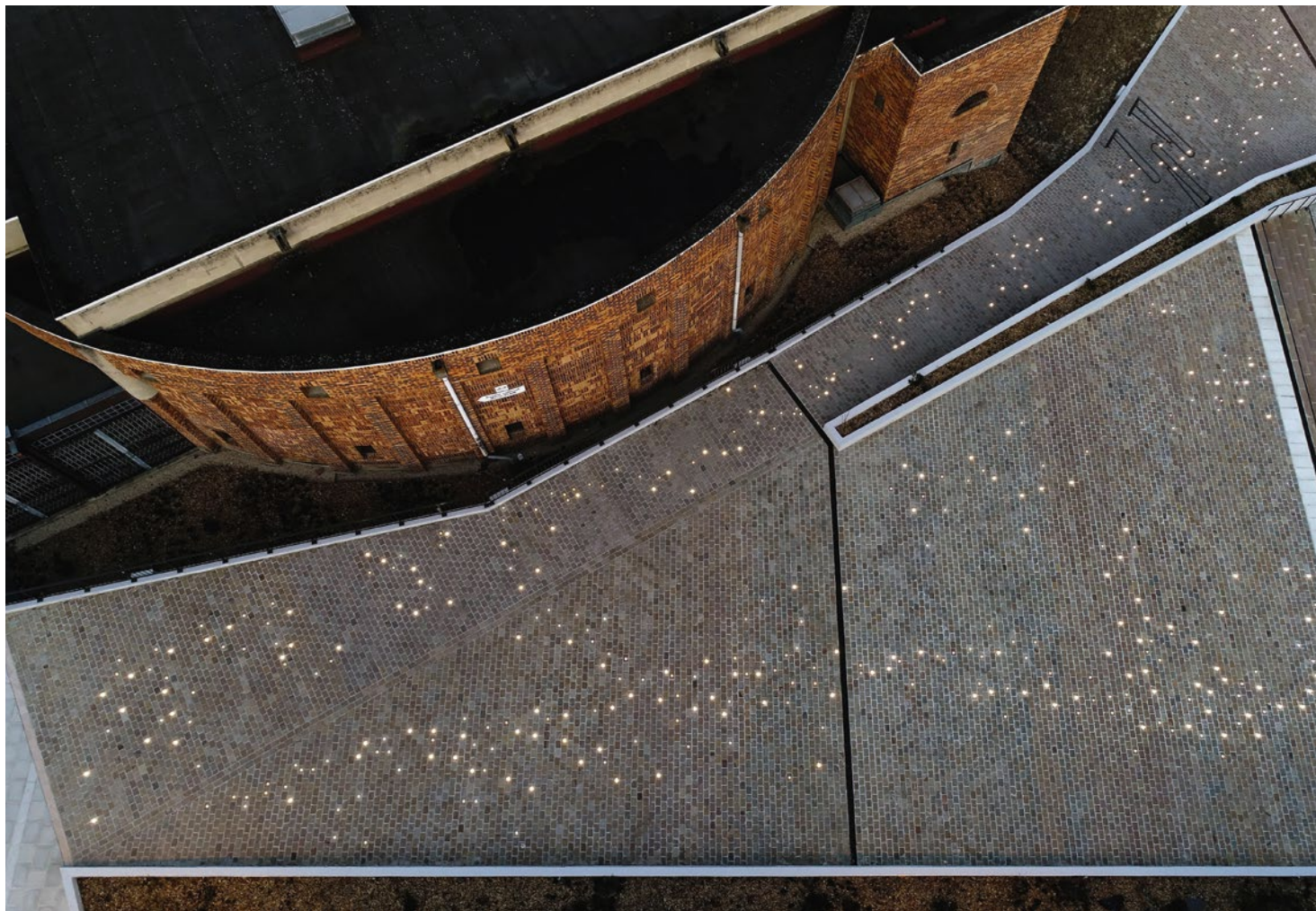




Credits from left to right:  
 1 - © Donal Murphy.  
 Product: HESS - City Elements 180.  
 2 - © Xavier Chabert.  
 Product: LEC - School Light.  
 3 - © HESS. Product:  
 HESS - City Elements 230.  
 4 - © Max Schulz.  
 Products: HESS -  
 Ravenna, Ledia LL











Credits from left to right:  
 1 - © AJJN Photography.  
 Product: RAGNI - Alturan  
 special.  
 2 - © Lumine'sens.  
 Product: RAGNI -  
 Domitienne.  
 3 - © Tecso. Product:  
 RAGNI - Alturan.  
 4 - © RAGNI. Product:  
 RAGNI - Alturan.







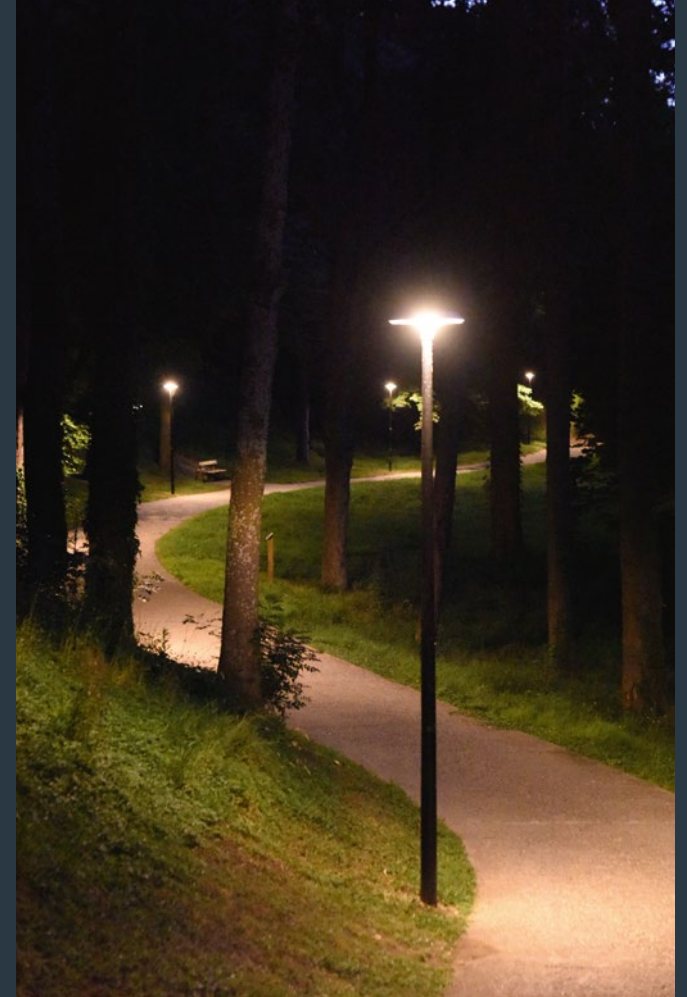
# PARKS, GARDENS & SQUARES

The green spaces come alive with a subtle glow, preserving both serenity and biodiversity. Light emphasizes the majesty of the trees, while discreet light markers trace the paths, and precise lighting accentuates sculptures and reliefs.

Intelligent systems adjust the intensity based on activity, reducing light pollution and promoting a balance between human use and respect for the ecosystem.

By choosing solar solutions and managing installations through IoT platforms, lighting becomes a sensitive response to natural cycles, creating inspiring, vibrant, and sustainable atmospheres.

Credits from left to right:  
 1 - © Nathan Häusermann. Product: NOVÉA ÉNERGIES - Akkor 1.4 Tekk.  
 2 - © Arel. Product: RAGNI: Cirko.  
 3 - © HESS. Product: HESS - Corvus.















Credits from left to right:  
 1 - © Frédéric Le Quééré.  
 Product: RAGNI - Cirko  
 Lyre.  
 2 - © BLight. Product:  
 RAGNI - Margo méga.  
 3 - © Daniele Schinea.  
 Product: RAGNI - Margo  
 méga.







Credits from left to right:  
 1 - © RAGNI, Product:  
 RAGNI - Irys MEGA.  
 2 - © Lumine'sens.  
 Product: RAGNI - Kassio  
 bollard.  
 3 - © BLight, Product:  
 RAGNI - Kassio bollard.















# SOFT PATHS



Pedestrian and cycling paths are illuminated with precision, offering optimal visibility that combines well-being and safety without disturbing the nocturnal environment. Precision optics, integrated backlight controls, and warm hues ensure comfort and harmony with the landscape.

Lighting adjusts to movement, modulating its intensity for efficient energy management. Solar solutions and passive reflective elements complement this system, creating reassuring paths that are both functional and respectful of natural rhythms.

Credits from left to right:  
 1 - © Frédéric Le Quééré. Product: RAGNI - Korner.  
 2 - © Bertrand Debeuret. Product: NOVEA ÉNERGIES - Combi Top 3 Griff.  
 3 - © Camille Saada. Product: ECO-INNOV - ECO-143.











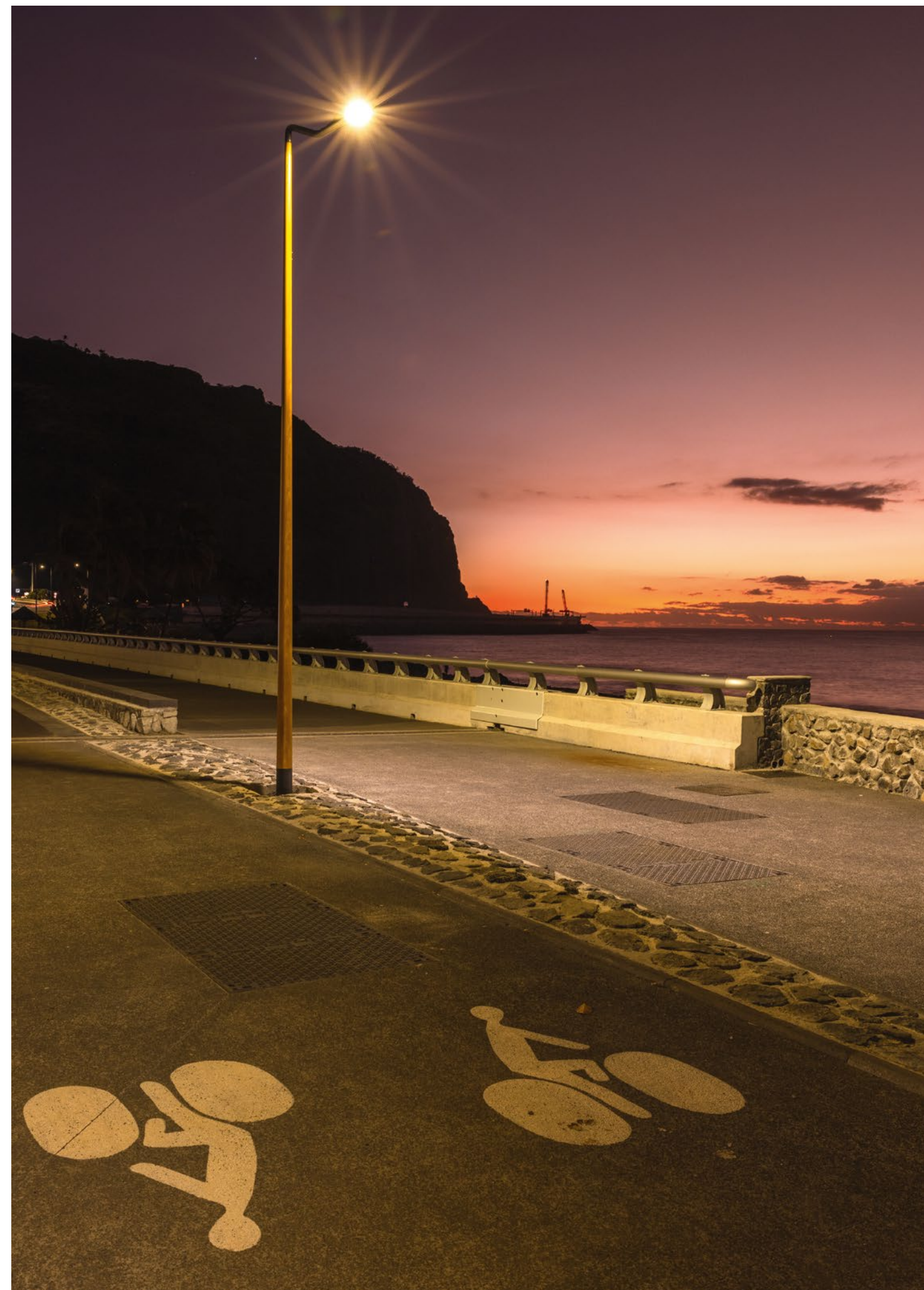
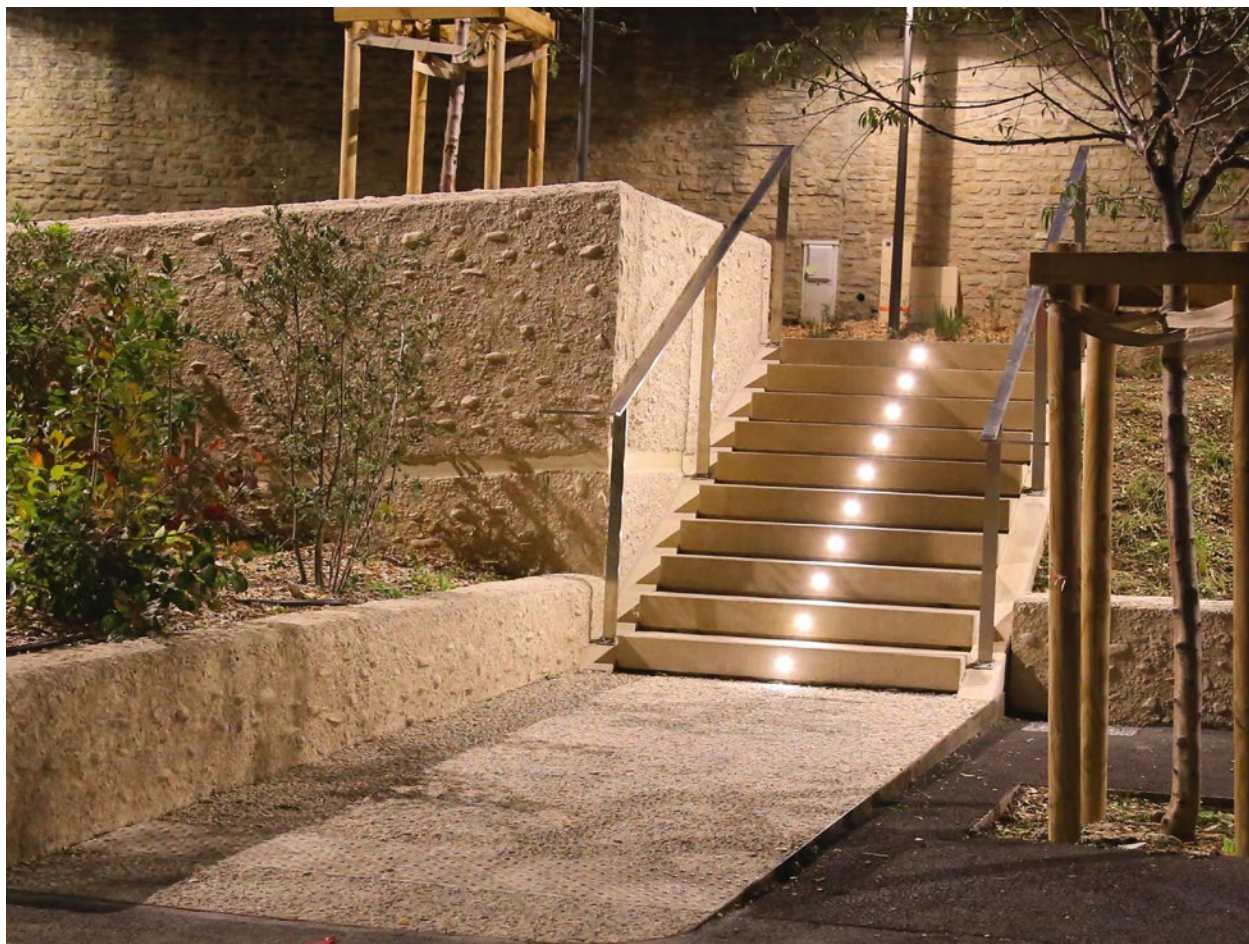




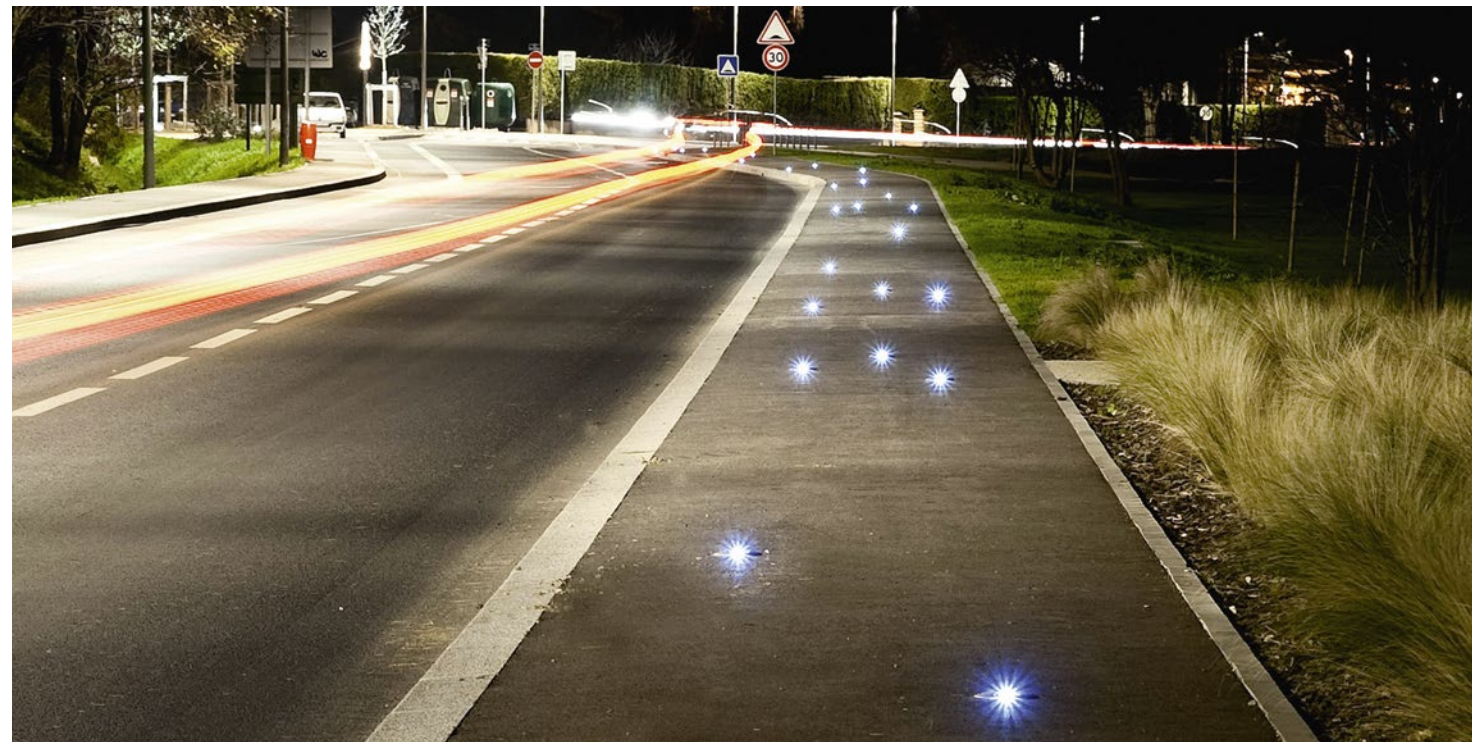




Credits from left to right:  
 1 - © Chantal Briand/  
 Studio Briand. Product:  
 ECO-INNOV - ECO-870.  
 2 - © LEC. Project owner:  
 City of Carpentras.  
 Specifier and contractor:  
 8/18 Paris. Product: LEC -  
 Bourgogne.  
 3 - © Lionel Ghiglì.  
 Product: RAGNI - Slide.











Credits from left to right:  
 1 - © Henri Olivier.  
 Product: ECO-INNOV -  
 ECO-Stone99.  
 2 - © Michel Djaoui.  
 Product: ECO-INNOV -  
 ECO-143.  
 3 - © Vincent.M /Thomas  
 Jouanneau. Project  
 owner: Syndicat Mixte  
 Baie du Mont Saint-  
 Michel. Contractors:  
 DFA - Dietmar Feichtinger  
 Architectes and BET  
 Schlaich Bergemann &  
 Partner. Product: ECO-  
 INNOV - ECO-845.











# BUS STOPS



Living spaces are reshaped in a light tailored to accompany every moment. Under a shaded canopy, anti-glare optics ensure a welcoming atmosphere, while smart sensors adjust brightness based on crowd.

Water features and green spaces remain preserved thanks to controlled light diffusion.

Solar solutions, evolving scenarios, and centralized control offer unprecedented flexibility, harmonizing aesthetics, comfort, and environmental responsibility.

Credits from left to right:  
 1 - © HESS. Product: HESS - Dalvik.  
 2 - © LEC. Product: LEC - Pyramide.  
 3 - © Arel. Product: NOVÉA ENERGIES - Combi Top 3 Griff.



















# URBAN & RESIDENTIAL



Urban lighting becomes intuitive and compatible with pedestrian and vehicular flows in real time. Warm hues limit glare, preserving both human well-being and nocturnal biodiversity.

Lighting emphasis shapes community spaces, inviting interaction and conviviality. Real-time diagnostics, adaptive dimming, and solar solutions: every detail contributes to a balanced, dynamic, and calming city.

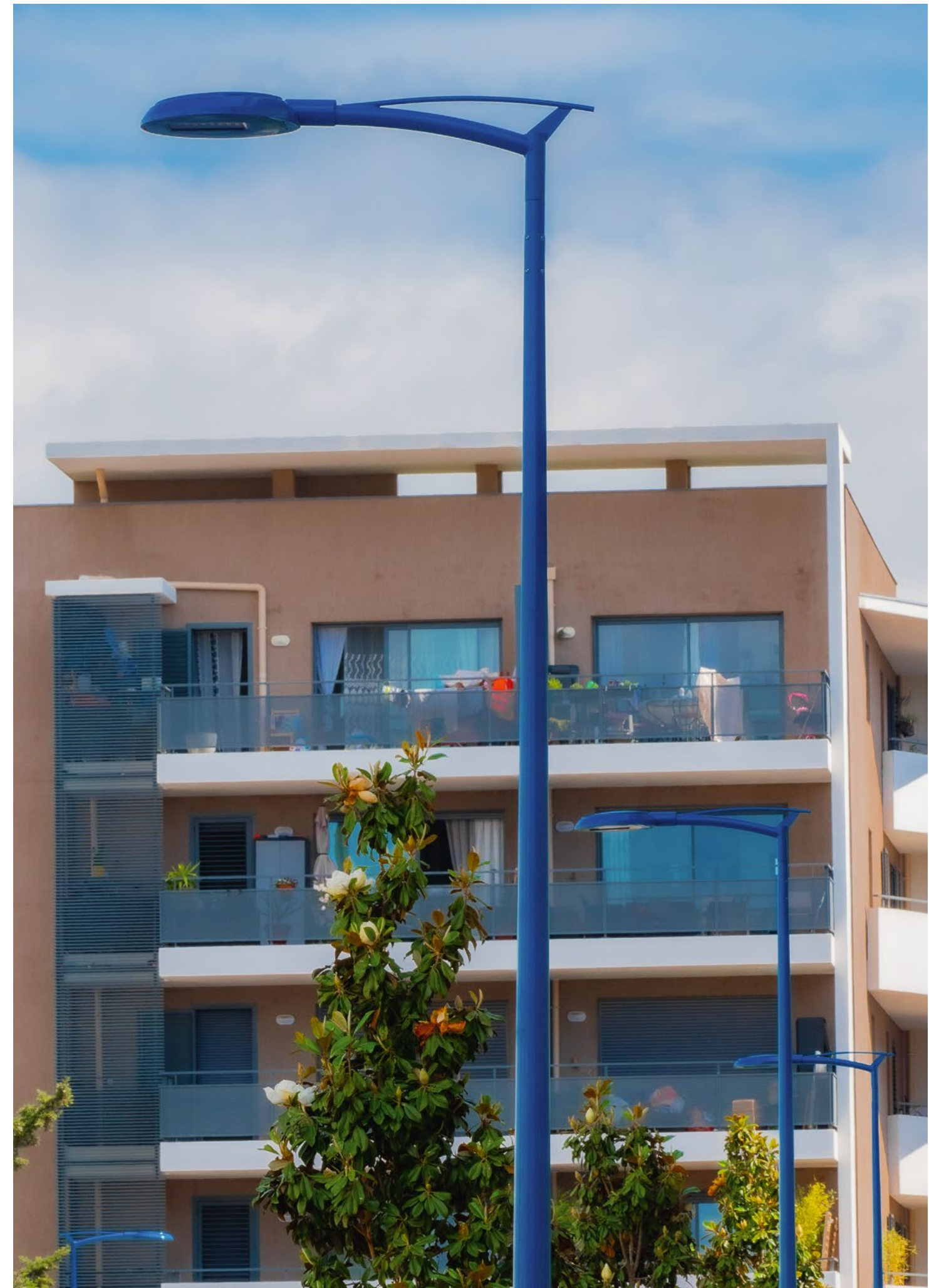
Credits from left to right:  
1 - © RAGNI. Products: RAGNI - Cirko suspended, Unia.  
2 - © HESS. Product: HESS - Residenza.  
3 - © HESS. Product: HESS - Residenza C.



















Credits from left to right:  
 1 - © MFROMER. Product: RAGNI - Chic.  
 2 - © Frederic Lequéré. Products: RAGNI - Combi top 3 Chic, Atilis.  
 3 - © Frederic Lequéré. Products: RAGNI - Cirko Flex, Lycia.  
 4 - © Frederic Lequéré. Product: RAGNI - Cirko Lyre.  
 5 - © Fabian Zeh. Product: HESS - City Elements Bollard.











Credits from left to right:  
 1 - © Frederic Lequéré.  
 Product: RAGNI - Cap Ferrat.  
 2 - © Frederic Lequéré.  
 Product: RAGNI - Monaco.  
 3 - © AG REP. Products:  
 RAGNI - Atinia Slim, Helis.







Credits from left to right:

- 1 - © Robert Walsh.  
Product: HESS- City Elements.
- 2 - © HESS. Product:  
HESS - City Elements.
- 3 - © Spanto. Product:  
RAGNI - Kassio.
- 4 - © TODD SPOTH  
PHOTOGRAPHY,  
LLC. Product: HESS -  
Campone.











Credits from left to right:  
 1 - © LEC. Product: LEC - Lucerne.  
 2 - © LEC. Product: LEC - Brunei.  
 3 - © medienreaktor. Product: HESS - Revara.  
 4 - © Nathan Hausermann. Product: RAGNI - Irys Mini.







Credits from left to right:  
 1 - © 11h45/Defacto. Project owner: Defacto. Lighting Designer: 8'18". Architects: Frenak & Jullien. Art: Le Pouce of César (1994). Product: LEC - Allevard.  
 2 - © HESS. Product: HESS - Arini.  
 3 - © LEC. Art: Françoise SCHEIN. Product: LEC - Special.















Credits from left to right:  
 1 - © Spanto. Products:  
 RAGNI - Atinia Slim,  
 Kairos.  
 2 - © RAGNI. Product:  
 RAGNI - Ava.  
 3 - © Lumiru EP. Products:  
 RAGNI - Pulse, Exis.











Sheraton

CROWNE PLAZA  
HOTEL

© HESS. Product: HESS - Faro.

URBAN & RESIDENTIAL





# PEDESTRIAN CROSSINGS



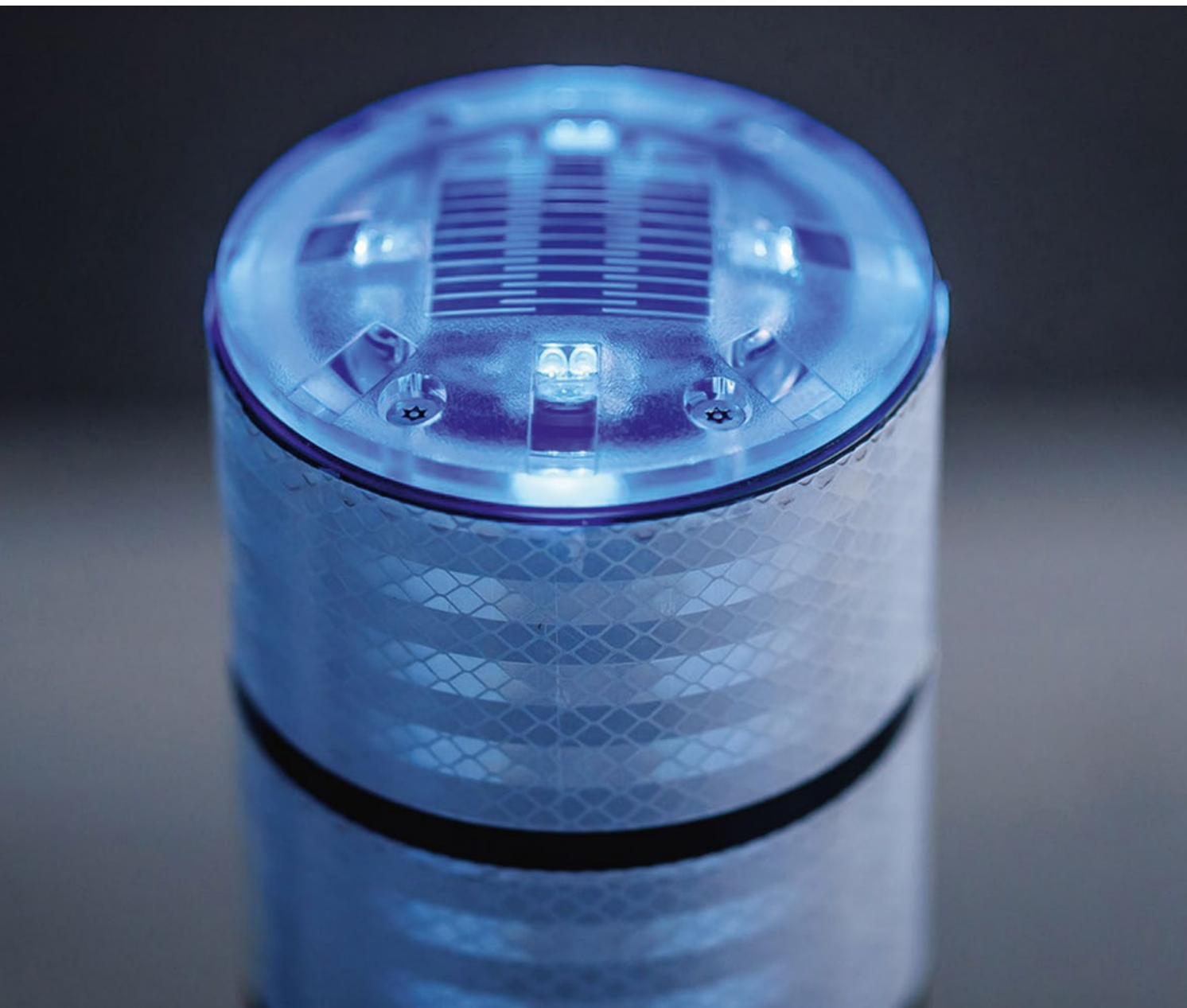
Pedestrian crossings and intersections are illuminated with precision to enhance safety, without excess. Lighting adjusts on demand, prioritizing energy efficiency and the preservation of surrounding ecosystems.

Light markers integrated into the ground or directional devices enrich the urban experience, making crossings more intuitive. With IoT controls enabling real-time monitoring, each installation adjusts to ambient conditions, improving mobility, making it smoother and more responsible.

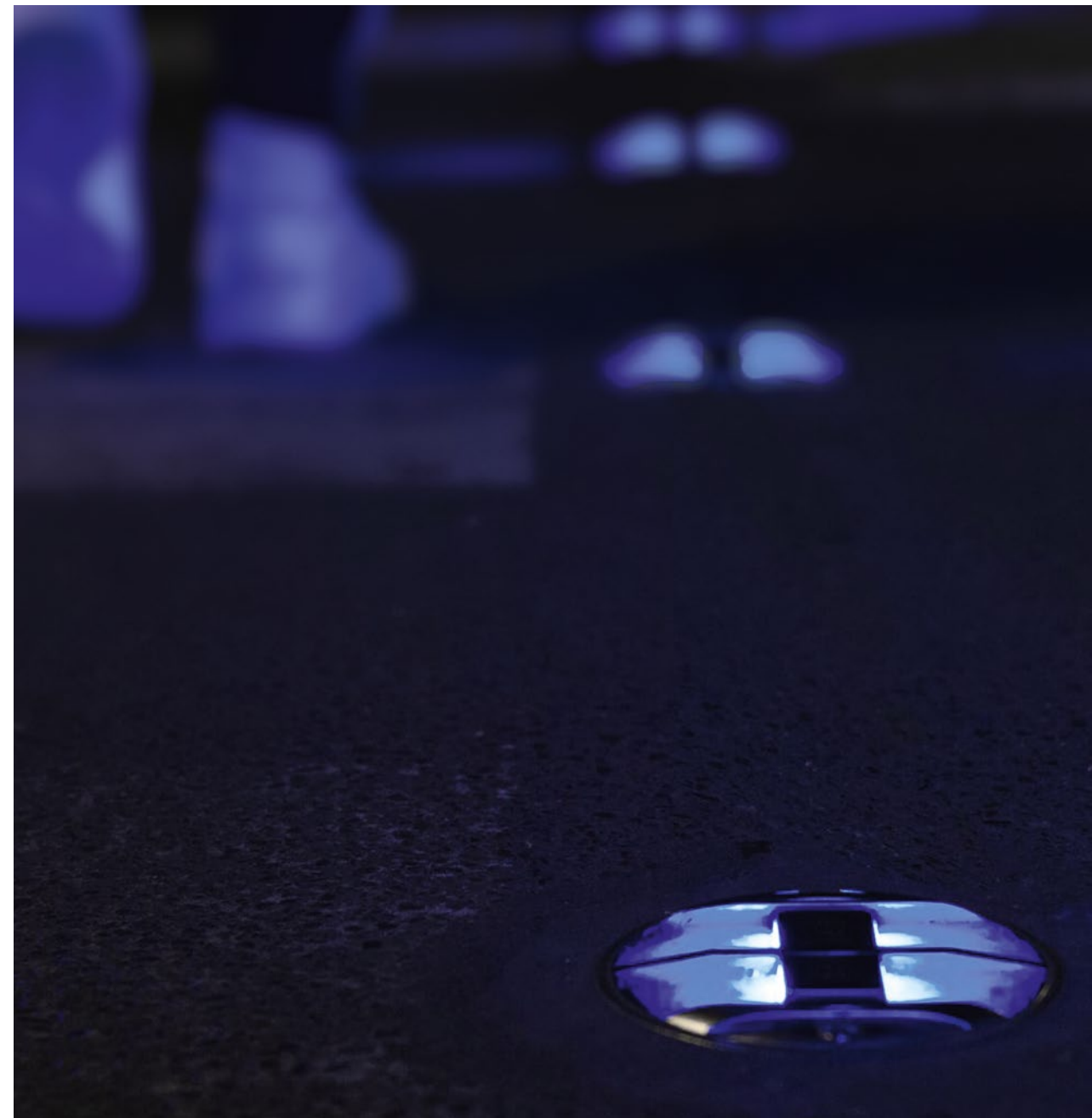
Credits from left to right:  
1 - © Frédéric Le Quéré, Products: RAGNI - Korner.  
2 - © HESS, Product: HESS - Dalvik.  
3 - © LEC, Product: LEC - Bourgogne.







Credits from left to right:  
 1/2 - © Nathanaël Mergui.  
 Product: ECO-INNOV -  
 ECO-CITY 35.  
 3/4 - © Karolina  
 Samborska. Product:  
 ECO-INNOV - ECO-848.











# ROADS & HIGHWAYS



On roads and highways, light follows the movement with precision and discretion. At the crossroads of performance and eco-responsibility, precision optics reduce light dispersion and preserve the night. Poles, carefully positioned, ensure uniform coverage, avoiding shadowed areas and overexposure.

For optimal visibility, light markers integrated into the ground guide the path, revealing the contours of the roadway, the curve of a turn, or the approach of an interchange. In sensitive areas, smart dimming and adapted color temperatures limit the impact on biodiversity, improving the balance between safety and preservation of the night sky.

Solar lighting paves the way for increased energy independence. Autonomous and adaptive, these luminaires reconcile mobility and sobriety, offering clear vision without compromising the environment.

Credits from left to right:  
 1 - © Stéphane Brabant / AFRIKAFUN. Product: RAGNI - Tekk M.  
 2 - © Lionel Ghigli. Product: RAGNI - Griff L.  
 3 - © Frédéric Le Quéré. Products: RAGNI - Cirko Flex, Lycia.











Credits from left to right:  
 1/2 - © NOVÉA  
 ÉNERGIES. Product:  
 NOVÉA ÉNERGIES -  
 Combi Top 3 Tekk.  
 3/4 - © Lionel Ghigli.  
 Product: NOVÉA  
 ÉNERGIES - Combi Top  
 3 Tekk.







Credits from left to right:  
1 - © MFROMER, Product: RAGNI - Tekk M.  
2/3 - © Michel Djaoui, Product: RAGNI - Archy 0.

GROUPE RAGNI





Credits from left to right:  
 1 - © RAGNI, Products:  
 RAGNI - Griff, Swing.  
 2 - © Spanto, Products:  
 RAGNI - Tekk, Swing.  
 3 - © Bernard  
 Prudhomme, Product:  
 RAGNI - Griff.















# PARKINGS



Parking areas are transformed into spaces where safety, efficiency, and environmental respect harmonize. Smart luminaires detect movement and adjust lighting based on traffic flow, reducing energy consumption without compromising visual comfort.

Thanks to sizing studies, light diffusion towards surrounding areas is minimized, ensuring a balance between performance and biodiversity protection. Solar lighting opens up new possibilities with autonomous installations, free from the constraints of the grid.

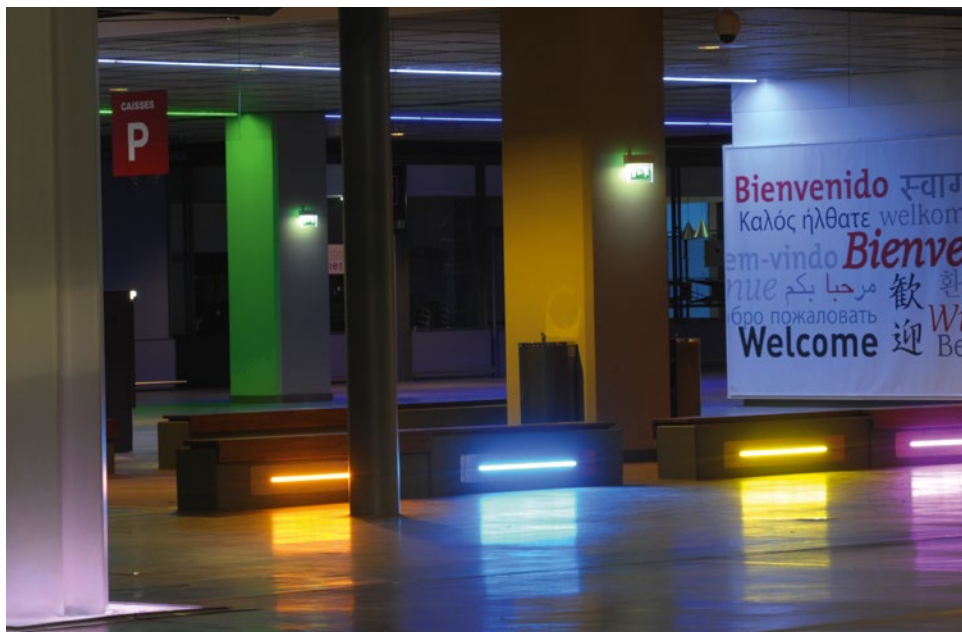
Entrances and exits are clearly defined with directional lighting, guiding each user smoothly.

IoT connectivity orchestrates real-time monitoring and maintenance, optimizing every parameter for simplified and efficient management.

Credits from left to right:  
 1 - © HESS. Product: HESS - Dalvik.  
 2 - © Jimmy Bolly. Product: RAGNI - Slide H.  
 3 - © LEC. Specifier: Pierre Vurpas. Product: LEC - Saint Raphael.







Credits from left to right:  
 1 - © HESS/VULKAN. Product: VULKAN - Special.  
 2 - © LEC. Product: LEC - Brunei.  
 3 - © NOVÉA ÉNERGIES. Product: NOVÉA ÉNERGIES - Combi Top 5 Tekk.

GROUPE RAGNI





Credits from left to right:  
 1 - © Arel. Product: NOVEA ENERGIES - Combi Top 3 Griff.  
 2 - © Arel. Product: RAGNI - Tekk M.  
 3 - © HESS. Product: HESS - Faro.  
 4 - © Peter Baum. Product: HESS - Reno Elements.











# SPORTS FACILITIES



Each field becomes a stage where light reveals performance and intensifies the emotion of the game. Our high-precision floodlights provide even coverage, eliminating shadows ensuring optimal comfort, both for players and spectators.

With connected solutions, lighting instantly adapts to events: dynamic dimming, festive RGBW light animations, each atmosphere is modulated with precision.

Environmental respect remains at the heart of innovation: advanced optics to minimize light dispersion, renewable energy sources like solar power, and intelligent management of luminous flux to minimize consumption during off-peak hours.

Designed to withstand the bad weather, our luminaires guarantee unchanging performance, ensuring a brilliant show at every encounter, while preserving the night and its natural balance.

Credits from left to right:  
1/2 - © Frédéric Le Quéré. Products: RAGNI - Bento Area.  
3 - © HESS/VULKAN. Products: VULKAN - V970X..







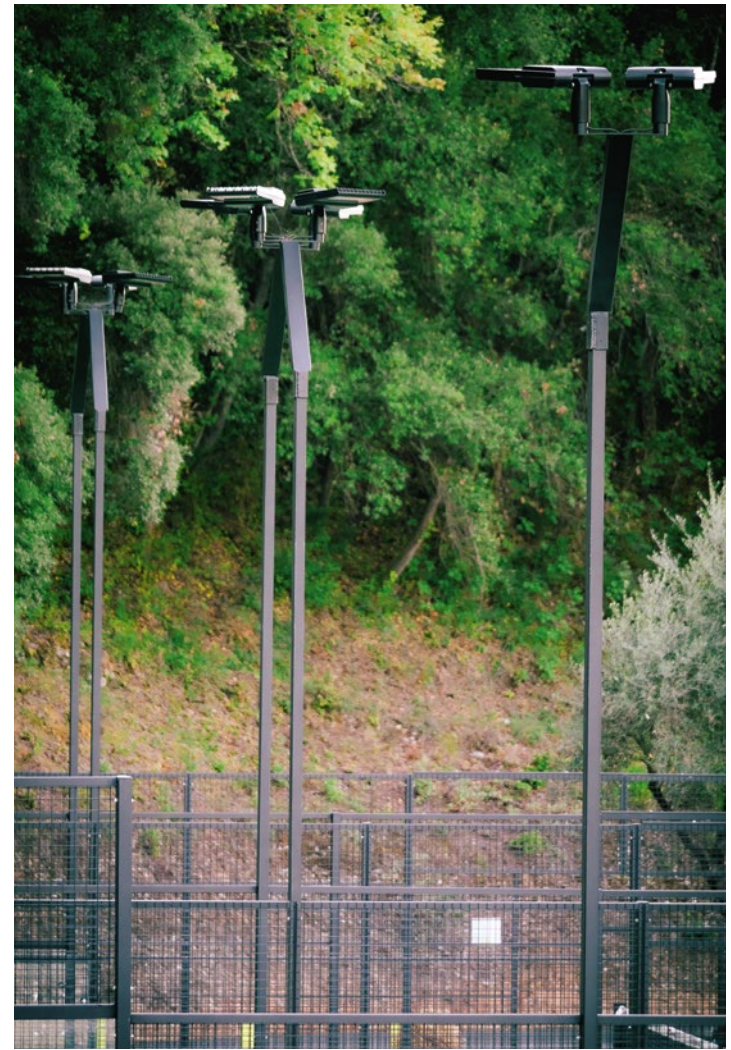
Credits from left to right:  
 1 - © NOVÉA ÉNERGIES.  
 Product: NOVÉA  
 ÉNERGIES - Combi Top  
 3 Tekk.  
 2/4/5 - © RAGNI. Product:  
 RAGNI - Bento Area M.  
 3 - © RAGNI. Product:  
 RAGNI - Bento M special.







Credits from left to right:  
 1 - © RAGNI. Product: RAGNI - Bento Area M.  
 2/4 - © RAGNI. Products: RAGNI - Irys MEGA, Aiguille.  
 3 - © HESS/VULKAN. Product: VULKAN - V970X.  
 5 - © RAGNI. Product: RAGNI - Bento M special.







# ROAD STRUCTURES



Bridges, tunnels, and road structures... Each element becomes a luminous signature, where functionality and aesthetics intertwine. Our linear luminaires reshape architectural silhouettes, offering a play of shadows and light that transform the nocturnal space into a living painting.

In tunnels, lighting instantly adapts to traffic and weather conditions, ensuring visibility and safety while controlling energy consumption. Bridges, on the other hand, are adorned with vibrant, dynamic and adjustable RGBW lighting, infusing a strong identity into the urban space, whether cultural, historical, or related to events.

Mindful lighting solutions protect ecosystems by limiting light pollution, particularly around waterways and sensitive areas. Solar lighting strengthens the sustainable approach, while corrosion-resistant materials ensure exemplary durability.

With centralized management, each project gains intelligence and responsiveness, balancing innovation, performance, and environmental commitment.

Credits from left to right:

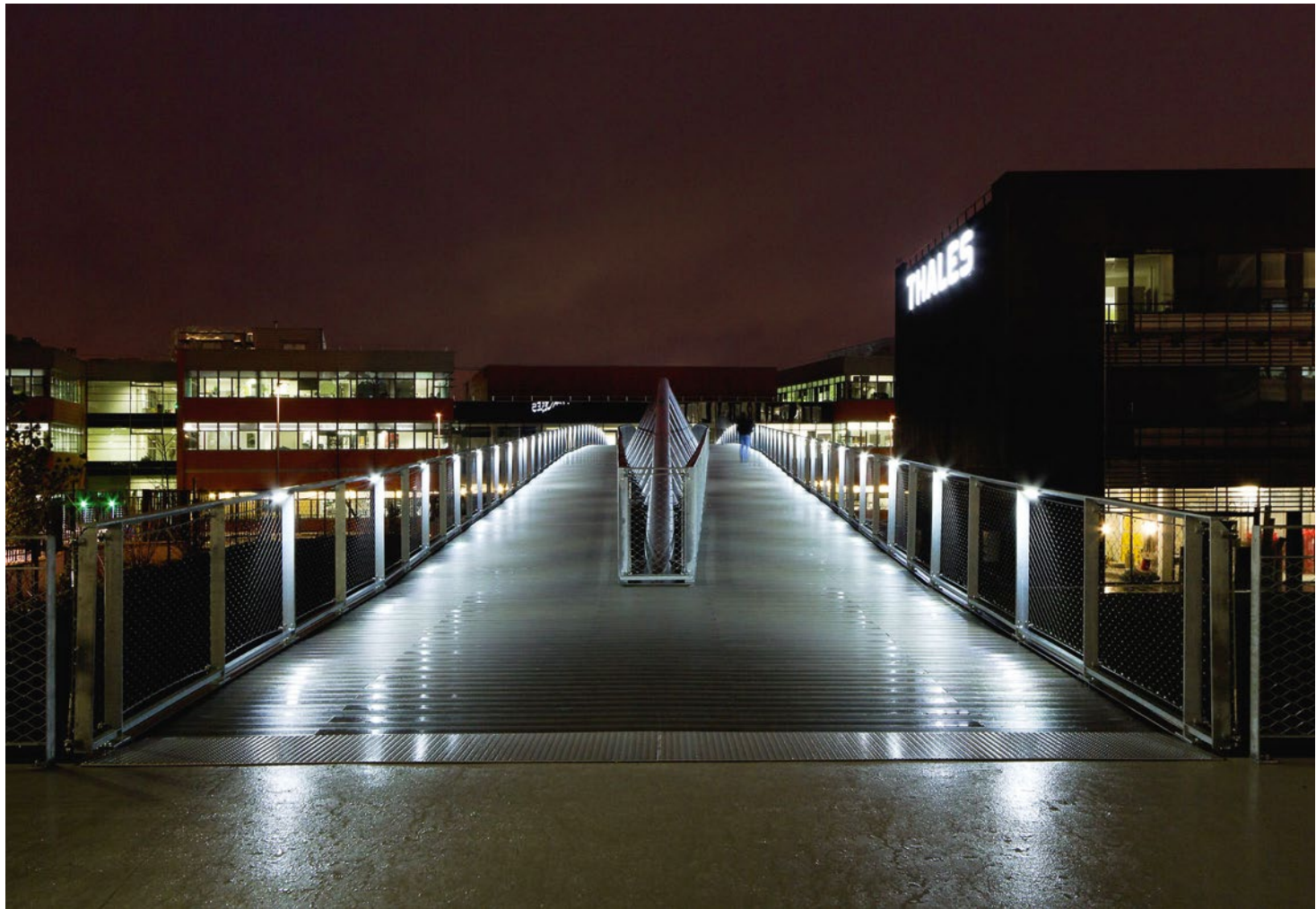
- 1 - © LEC. Product: LEC - Belval.
- 2 - © LEC. Specifier and lighting design: City of Lyon – Direction Eclairage Public. Product: LEC – Clem.
- 3 - © LEC. Product: LEC - Luminy 4.











Credits from left to right:  
 1 - © Jean-Philippe Humbert. Product: LEC - School Light.  
 2/4 - © Cheick Sylla. Product: NOVÉA ÉNERGIES - Combi top 5 Griff.  
 3 - © Albert Brunsting. Product: HESS - Special.

GROUPE RAGNI

ROAD STRUCTURES





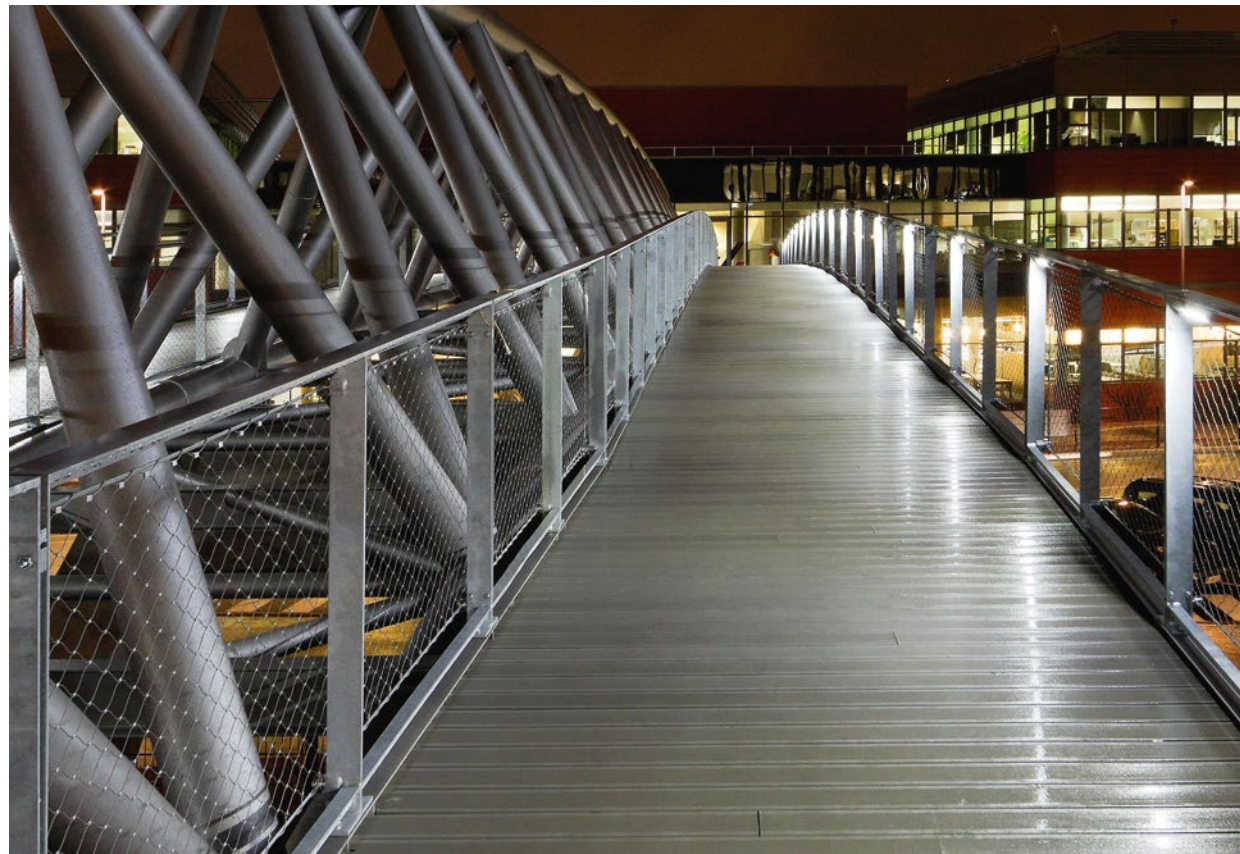








Credits from left to right:  
 1 - © LEC. Product: LEC - Brunei.  
 2 - © LEC. Specifier: Artcad. Contrator: Baudin Chateauf. Product: LEC - Luminy 4.  
 3 - © Renaud Araud. Specifier: Société Française du Tunnel Routier du Fréjus. Product: LEC - Savoie.  
 4 - © Jean-Philippe Humbert. Specifiers: Speeg & Michel et associés et Art & Build agencies. Product: LEC - Belval.







Credits from left to right:  
 1 - © Nicolas Waltefaulge, Specifier: City of Besançon, Product: LEC - Arches.  
 2 - © Nicolas Touvenin, Product: LEC - Brunei.



Our values



PASSION



AGILITY



RESPECT



OPERATIONAL  
EXCELLENCE



PROXIMITY



CREATIVITY

## OUR APPROACH

At GROUPE RAGNI, our experts take a holistic approach to your project, analyzing every detail to deliver the perfect technology and design tailored to your needs.

# For a bright and sustainable future



### ANALYSIS FROM THE PROFIL

- **Audit** of existing or future lighting and infrastructure
- **Perimeter** of the project and use
- **Integration** of biodiversity



### CUSTOMIZED SUPPORT

- **Tailor-made products and technologies** according to your needs
- **Multiple studies** (photometric, energetic, mechanical) to define the best solution
- **Project financing study** of your project



### DESIGN & DEVELOPMENT PRODUCT

- **Eco-design** and life cycle analysis
- **All in-house skills**
- **R&D**
- **Constant** evolution



### MANUFACTURING

- **7 production sites**
- **5** in France
- **1** in Germany
- **1** in the United States



### INSTALLATION

- **Installation tools**



### OPERATION & MAINTENANCE

**Long-term local support** through a team present in the field



# TAILOR-MADE



Credits from left to right:  
 1 - © Claire Bailey.  
 Product: RAGNI - Lampion Glow.  
 2 - © Robert Walsh.  
 Product: HESS - City Elements 230.  
 3 - © Arel. Product: RAGNI - Lampion Méga.  
 4 - © Tecso. Product: RAGNI - Lampion Mini.  
 5 - © Luminu EP. Product: RAGNI - Fragment.  
 6 - © Frédéric Le Quéré.  
 Product: RAGNI - Korner.







Credits from left to right:

1 - © LEC. Lighting designer: Atelier Lumière. Architect: Pierre Nègre. Product: LEC - Special.

2 - © RAGNI. Product: RAGNI - Korner.

3 - © LEC. Art: Françoise SCHEIN. Product: LEC - Special.

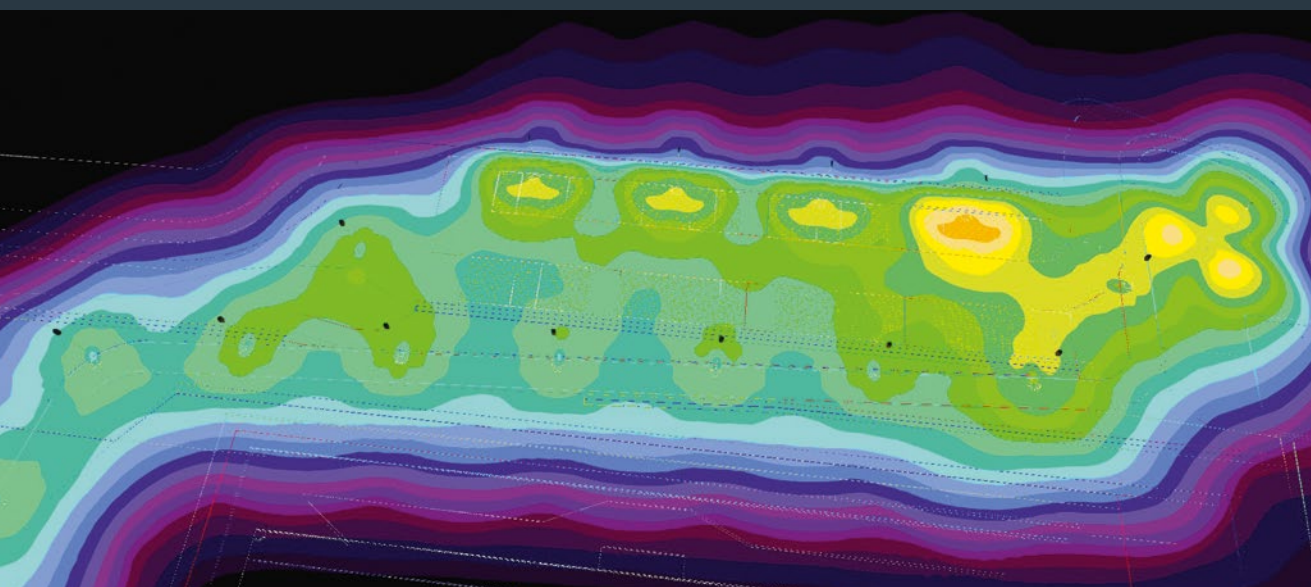
4 - © Robert Walsh. Product: HESS - City Elements 230.





# TECHNICAL STUDIES

Good lighting is, above all, lighting that is perfectly suited to its environment and purpose. Each project undergoes a specific study conducted by our experts using advanced simulation softwares. This analysis allows us to optimize the power and photometric distribution of the luminaires to precisely meet the requirements of each client.



Guidance throughout your project

The GROUPE RAGNI's engineers support and guide you throughout your project:

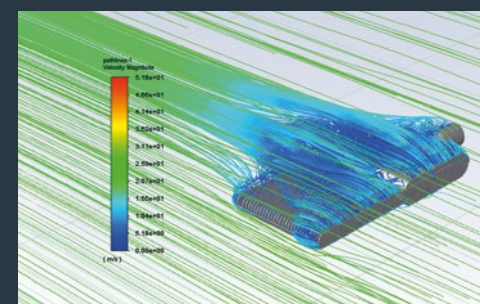
- Selection of the most suitable light markers and floodlights,
- Simulations and on-site tests,
- Definition of necessary adaptations and customizations,
- Selection of installation solutions to ensure the longevity of the equipment,
- Management of multiple coordinations, particularly for international projects.



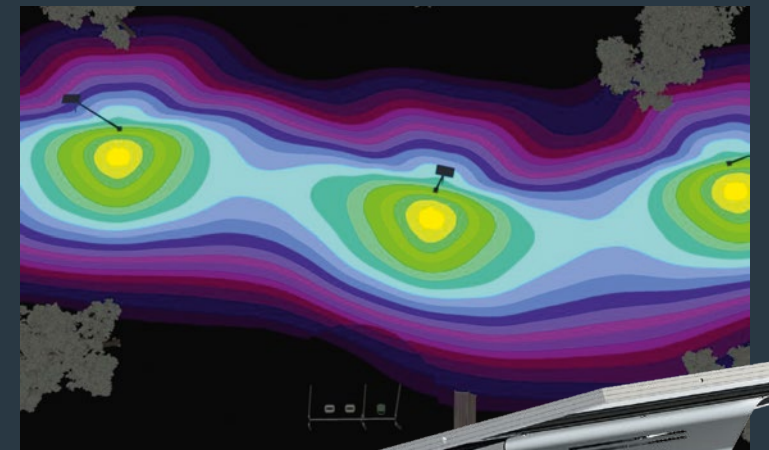
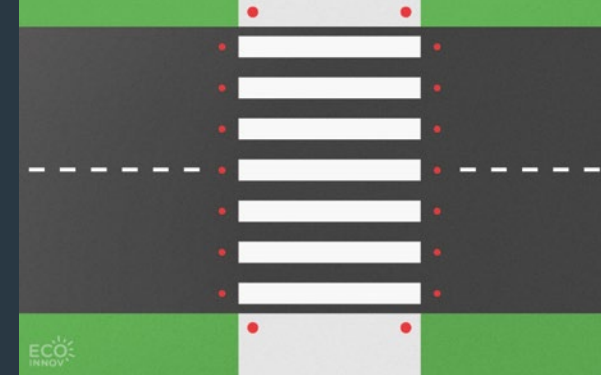
Thanks to Computer-Aided Design, our design offices ensure the technical feasibility and compliance of the luminaire with the end user's needs.

Our lighting engineers rely on high-precision equipment – photogoniometer, spectrometer, photometric analysis software – to ensure optimal performance.

Each luminaire undergoes a series of rigorous tests in our specialized laboratories: waterproofness, shock resistance, aerodynamic performance... A guarantee of quality and durability for all your lighting projects.



GROUPE RAGNI





# OPERATION & MAINTENANCE

Long-term local support through a team present in the field.

## Upgradeable and connected platform (SEV© Connect)

For optimized management of public lighting, GROUPE RAGNI offers smart solutions combining energy performance and economic efficiency. Thanks to advanced detection and remote control management devices integrated into our platform, it becomes possible to supervise and adjust your installations remotely, thereby reducing waste and optimizing resources.

Our expertise in Smart City solutions provides precise and adaptable control, ensuring fine management of your lighting infrastructure while promoting a sustainable and efficient approach to urban lighting.

To ensure the sustainability of your areas, we support you in:



Lighting



Environment



Water



Energy



Mobility



Buildings

## GET IN TOUCH

Do you have  
a project?



+33(0)4 93 31 05 48



[groupe-ragni.com](http://groupe-ragni.com)



[info@groupe-ragni.com](mailto:info@groupe-ragni.com)



Ch. du vallon des Vaux, Le Gueirard,  
06800 Cagnes-sur-Mer, France

**GROUPE RAGNI**



ACCADIA L	Buildings HESS	P11	ATINIA SLIM	Bus stops RAGNI	P74	CALETI	Building surroundings RAGNI	P26	COMBI TOP GRIFF	Parks, Gardens & Squares NOVÉA ÉNERGIES	P54	ECO-845	Soft paths ECO-INNOV	P68	IRYS MINI	Building surroundings RAGNI	P29
				Urban & Residential RAGNI	P93, 106	CAMPONE	Urban & Residential HESS	P95		Soft paths NOVÉA ÉNERGIES	P57	ECO-848	Pedestrian crossings ECO-INNOV	P115		Urban & Residential RAGNI	P99
			AVA	Urban & Residential RAGNI	P107	CAP FERRAT	Urban & Residential RAGNI	P92		Bus stops NOVÉA ÉNERGIES	P73	ECO-870	Soft paths ECO-INNOV	P64	KAIROS	Bus stops RAGNI	P74
			BAIA R	Parks, Gardens & Squares RAGNI	P55	CHATEAUNEUF	Building surroundings LEC	P22, 26		Parkings NOVÉA ÉNERGIES	P136	ECO-CITY 35	Pedestrian crossings ECO-INNOV	P114		Urban & Residential RAGNI	P107
			BAZAS	Parks, Gardens & Squares RAGNI	P52	CHIC	Bus stops RAGNI	P74	COMBI TOP TEKK	Soft paths NOVÉA ÉNERGIES	P60	ECO-STONE 99	Soft paths ECO-INNOV	P68	KASSIO	Building surroundings RAGNI	P28
AIGUILLE	Urban & Residential RAGNI	P82	BELVAL	Buildings LEC	P13		Urban & Residential RAGNI	P88		Bus stops NOVÉA ÉNERGIES	P79	EMBLÈME	Urban & Residential RAGNI	P86, 91		Urban & Residential RAGNI	P95
AKKOR 1.4	Parks, Gardens & Squares NOVÉA ÉNERGIES	P42		Road structures LEC	P146	CIRKO	Parks, Gardens & Squares RAGNI	P43		Roads & Highways NOVÉA ÉNERGIES	P122, 123	ENOA	Building surroundings NOVÉA ÉNERGIES	P26	KASSIO BOLLARD	Parks, Gardens & Squares RAGNI	P50
				Road structures LEC	P152, 157					Parkings NOVÉA ÉNERGIES	P134	EXIS	Urban & Residential RAGNI	P107		Soft paths RAGNI	P58
AKKOR 2.6	Soft paths NOVÉA ÉNERGIES	P61	BENTO AREA	Sports facilities RAGNI	P140, 142, 143, 144	CIRKO FLEX	Urban & Residential RAGNI	P88		Sports facilities NOVÉA ÉNERGIES	P142				KORNER	Building surroundings RAGNI	P23, 30
	Pedestrian crossings NOVÉA ÉNERGIES	P116					Roads & Highways RAGNI	P119	CORSICA	Buildings LEC	P13, 16	FARO	Building surroundings HESS	P24		Parks, Gardens & Squares RAGNI	P46
ALICANTE	Buildings LEC	P10	BENTO M	Sports facilities RAGNI	P142, 145	CIRKO LYRE	Parks, Gardens & Squares RAGNI	P48	CORVUS	Parks, Gardens & Squares HESS	P43		Urban & Residential HESS	P110		Soft paths RAGNI	P56
							Urban & Residential RAGNI	P89					Parkings HESS	P136		Urban & Residential RAGNI	P104
ALLEVARD	Buildings LEC	P09, 15, 20	BONI	Urban & Residential RAGNI	P90				DALVIK	Bus stops HESS	P72, 75	GRIFF L	Roads & Highways RAGNI	P119		Pedestrian crossings RAGNI	P112
	Urban & Residential LEC	P100, 102	BORDEAUX	Buildings LEC	P18	CIRKO SUSPENDED	Urban & Residential RAGNI	P80		Pedestrian crossings HESS	P113		Roads & Highways RAGNI	P126, 127			
ALTURAN	Building surroundings RAGNI	P40	BOURGOGNE	Building surroundings LEC	P38	CITY ELEMENTS	Buildings HESS	P13, 25, 26		Roads & Highways HESS	P120	GRIFF S	Building surroundings RAGNI	P27	LAMPION GLOW	Building surroundings RAGNI	P29
				Soft paths LEC	P64		Building surroundings HESS	P25, 26, 33, 34, 36		Parkings HESS	P132		Soft paths RAGNI	P70	LAMPION MÉGA	Building surroundings RAGNI	P24
ARCHES	Buildings LEC	P16, 18, 20, 23		Pedestrian crossings LEC	P113		Parks, Gardens & Squares HESS	P44, 53	DOMITIENNE	Building surroundings RAGNI	P40		Parkings RAGNI	P139		Parks, Gardens & Squares RAGNI	P44
	Building surroundings LEC	P23	BRUNEI	Buildings LEC	P14, 20		Urban & Residential HESS	P94	DOMITIENNE FLEX	Building surroundings RAGNI	P33	HAVRE	Buildings LEC	P18	LANTANA	Road structures RAGNI	P153
	Road structures LEC	P153, 158		Building surroundings LEC	P36		Pedestrian crossings HESS	P116		Parks, Gardens & Squares RAGNI	P46	HELIS	Urban & Residential RAGNI	P93	LEDIA LL	Building surroundings HESS	P37
ARCHY	Roads & Highways RAGNI	P124, 125		Soft paths LEC	P62	CITY ELEMENTS BOLLARD	Urban & Residential HESS	P89	ECO-129	Soft paths ECO-INNOV	P66	IRYS MÉGA	Parks, Gardens & Squares RAGNI	P50	LIGNON	Buildings LEC	P16, 20
ARINI	Urban & Residential HESS	P101		Bus stops LEC	P76	COMBI TOP ATINIA SLIM	Urban & Residential NOVÉA ÉNERGIES	P84	ECO-143	Soft paths ECO-INNOV	P57, 58, 59, 66, 69		Urban & Residential RAGNI	P82		Parkings HESS	P44
ARO	Roads & Highways RAGNI	P130		Urban & Residential LEC	P98												
ATILIS	Urban & Residential RAGNI	P88		Road structures LEC	P148, 156, 158	COMBI TOP CHIC	Urban & Residential NOVÉA ÉNERGIES	P88					Sports facilities RAGNI	P144, 145			
				Parkings LEC	P134												



LIVORNO	Parks, Gardens & Squares HESS	P138	NIGHT LOUNGE	Urban & Residential RAGNI	P108	SPRINT	Pedestrian crossings RAGNI	P117
			PALAIS ROYAL	Parks, Gardens & Squares LEC	P46	STERIA	Road structures RAGNI	P153
LUCERNE	Building surroundings LEC	P29	PASSY	Buildings LEC	P16	SWING	Roads & Highways RAGNI	P128
	Bus stops LEC	P73		Building surroundings LEC	P38	TEKK M	Roads & Highways RAGNI	P118, 126, 128
	Urban & Residential LEC	P98	PULSE	Urban & Residential RAGNI	P107		Parkings RAGNI	P136, 138
	Road structures LEC	P152				TOMINIA	Urban & Residential RAGNI	P99
LUMINY	Buildings LEC	P20	PYRAMIDE	Bus stopss LEC	P73	UNIA	Urban & Residential RAGNI	P80
LUMINY 2	Buildings LEC	P09, 10, 17, 19, 20	RENO ELEMENTS	Parks, Gardens & Squares HESS	P45	V970X	Sports facilities HESS	P141, 145
				Parkings HESS	P137			
LUMINY 4	Buildings LEC	P08, 10, 14, 16, 18	REVARA	Urban & Residential HESS	P99	VENCE	Urban & Residential RAGNI	P87, 104
	Road structures LEC	P147, 156		Pedestrian crossings HESS	P116	VIGO	Building surroundings HESS	P33
LUMINY 6	Buildings LEC	P13	RESIDENZA	Urban & Residential HESS	P81		Parks, Gardens & Squares HESS	P53
LYCIA	Urban & Residential RAGNI	P88	RESIDENZA C	Urban & Residential HESS	P81			
MARGO	Parks, Gardens & Squares RAGNI	P49	SAINT RAPHAËL	Parkings LEC	P133			
	Roads & Highways RAGNI	P128	SAVOIE	Road structures LEC	P157			
METEOR	Urban & Residential LEC	P96	SCHOOL LIGHT	Building surroundings LEC	P36			
MONACO	Building surroundings RAGNI	P29		Road structures LEC	P150, 153			
	Urban & Residential RAGNI	P92	SHADOW LIGHTS	Building surroundings HESS	P30			
MULTI TOP 6 GRIFF	Parks, Gardens & Squares NOVÉA ÉNERGIES	P55	SLIDE	Soft paths RAGNI	P65			
				Parkings RAGNI	P133			
MULTI TOP 6 TEK K	Soft paths NOVÉA ÉNERGIES	P71						







GROUPE RAGNI brings together professionals with complementary areas of expertise, ranging from grid and solar autonomous public lighting to connected environmental solutions. As a trusted partner to local authorities seeking to make savings and optimize their resources, we support them in their environmental and energy transition thanks to our unique know-how built on a century of experience combining industrial expertise and a culture of innovation.

Together, we can create...

...a bright and sustainable future.

[groupe-ragni.com](http://groupe-ragni.com)



This brochure uses vegetable-based inks  
and paper from sustainably managed forests.